

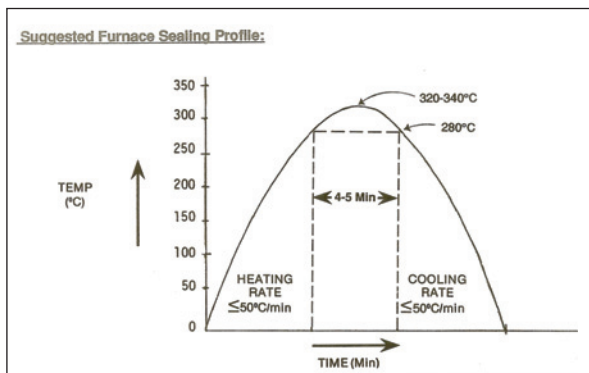
Gold Tin – The Unique Eutectic Solder Alloy

Introduction

The eutectic gold-tin alloy is 80%Au/20%Sn with a eutectic of 280°C (556°F) and is reflowed in a pure nitrogen or forming gas* atmosphere, which forms the “flux”, normally onto gold based metallisations. The peak reflow temperature is usually 320-340°C in a bell shaped profile, with a dwell time at peak temperature of 2-3 minutes, and a total cycle time of 20-30 minutes, depending on the thermal load in the furnace/chamber. See Figure 1 for a “typical” gold-tin reflow cycle. The alloy provides excellent wetting characteristics, great joint strength, superior resistance to corrosion, and superior thermal conductivity, making it the material of choice in many applications. With the increasing miniaturization of line widths on silicon and with the increasing transistor count, according to Moore’s Law, the thermal properties of the gold-tin alloy become more significant.

Its reliability has been proven in Mil Std 883 applications for die-attach and in solder lid sealing applications for over 30 years with MTBF in excess of 25 years. It certainly can be referred to in this Deming era of TQM (Total Quality Management) as a material capable of yielding “zero defects”.

Figure 1. Au-Sn Reflow Profile



Attributes

- Excellent wettability
- High joint strength, tensile strength is 275 MPa (40,000 lbs./sq. inch)
- Yield strength 31.5 psi x 10³
- Excellent resistance to corrosion
- High Thermal Conductivity 0.57 w/cm°C@85°C
- TCE (Temperature Coefficient of Expansion) matches many of the materials used in high reliability applications, viz., silicon, GaAs, GaP, InP, alumina ceramic, Kovar, Cu, CuW and alloy 42 viz., 16ppm/°C@20°C

- High surface tension, zero wetting angle
- Fluxless soldering, the original flux-free reflow alloy
- Suitable for “step soldering” applications

Processing Considerations

Gold-tin is usually the alloy of choice when joining gold-bearing surfaces, such as gold plating (typical minimal thickness of 1.27 microns), sputtered Au films, Au, Pt-Au and Pd-Au thick film metallisations. Because of the high surface tension and zero wetting angle Au-Sn does not flow easily on a horizontal surface, although it has excellent wettability, pressure is required to ensure good, void free, reflow. In the case of lid-sealing applications to ceramic metallised and plated packages, a clip of a suitable pressure is used to ensure that a good fillet of solder is seen around the entire periphery of the lid.

In some cases gold-tin can be used to solder plated nickel surfaces, which are notoriously difficult due to nickel oxide formation. With the forming gas* option, and a higher temperature approaching 350°C, the oxide can be reduced back to nickel metal and, due to the excellent wetting properties of gold-tin, a void-free joint can be formed.

When considering the gas to be used, nitrogen is acceptable in the majority of cases, but forming gas was historically used to ensure that any residual tin-oxide in the gold-tin solder itself was reduced by the action of the hydrogen. In both cases the supply of gas has to be from a high purity monitored line and the oxygen content of the gas must remain below 20ppm. Thus, an oxygen monitor is highly desirable to ensure complete compliance to this level.

A typical gold-tin sealing profile for a furnace application is illustrated here. The important parameters, apart from the gas purity and flow rate, are the ramp up, time at peak temperature and cooling rate. These can all be varied by furnace set-up and design, and the thermal soak of the items being processed. In general the following should be typical:

- Ramp rate of 50°C per minute, with no dwell time, up to a peak temperature of 320°C
- A time above the eutectic temperature of 280°C for 2-3 minutes, with a bell shaped profile — no plateau at peak temperature
- A cooling rate of 50°C per minute or less to prevent any thermal stress on the component

OVER →

Form No. 98051 R1

S O L D E R

INDIUM CORPORATION®

www.indium.com
 askus@indium.com
 PRC +86 (0)512 628 34900
 SINGAPORE +65 6268 8678
 UK +44 (0) 1908 580400
 USA +1 315 853 4900



APPLICATION NOTE

Gold Tin – The Unique Eutectic Solder Alloy

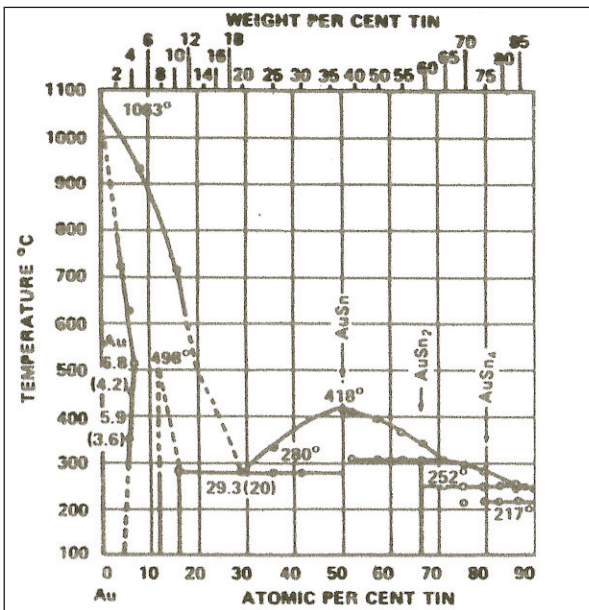
APPLICATION NOTE

- The thermocouple used to profile the furnace should be calibrated and always attached to the component being reflowed, with the furnace belt loaded as it would be in production use. In this way a true reflection of the temperature profile at the solder interface is recorded, rather than the gas flow temperature if the thermocouple is sitting up in the gas flow.

When used in a die-attach application, the preceding rules apply. These rules can be modified to ensure complete gas coverage of the die-attach area. Appropriate pressure should be applied at the die interface to ensure good void-free spread of the solder, but with no agitation or ultrasonic assistance, as the eutectic is at a true 80/20.

This is not the case with, for example, the 98%Au-2%Si alloy used in silicon die-attach, as the true eutectic is at 3.1%Si. In this case, thermosonic power is required to scrub the die to diffuse the Si from the chip into the solder so that it reflows when that alloy percentage is reached. The scrubbing action here also ensures that the eutectic appears around the periphery of the die, visibly ensuring that the eutectic composition has been reached.

Figure 2. Au-Sn Phase Diagram



*Forming gas composition is commonly 95% nitrogen and 5% hydrogen, increasing the hydrogen content increases the reduction process.

Design Considerations

As gold-tin solder has a zero wetting angle, it requires pressure to reflow. The dimensions of a solder preform or frame have to be carefully considered to ensure a good void-free visible fillet, but without excess solder-forming solder balls as the fillet is formed. These solder balls can be visually undesirable, in the case of lid sealing, or functionally disastrous if these solder balls fall into the cavity. This is especially true for any unpassivated die, as with SAW devices.

So the general rule is that the gold-tin preform should be 90-95% of the area of the die or metallization, always ensuring, in the case of lid sealing, that the preform frame is smaller on the OD by 250 microns and at least 125 microns larger on the ID dimension.

In addition, Au-Sn solder has a little quirk that is obvious from scrutiny of the phase diagram, but is not a commonly known attribute of this eutectic material. (Figure 2) When the Au-Sn is joining two gold-bearing or plated surfaces the gold diffuses into the alloy at the melting temperature, so we control the time above the eutectic temperature and the peak temperature, as detailed above. However, as diffusion occurs and the gold content of the solder increases, the phase line for gold is at an angle of 75°, (very steep). At 18% tin the reflow temperature is 350°C and at 16% tin it is at 400°C. Thus subsequent processing of Au-Sn solder, or indeed any other alloys, in a “step solder” process, is acceptable between 300°C and 350°C.

This can be used to our advantage, but in attempting to remove Kovar lids soldered to ceramic packages it must be remembered that the solder will only reflow again at this higher temperature. In defect investigations it is far easier to remove a lid using a scalpel inserted at the corner of the lid and to apply pressure at a corner, which enables the lid to be removed without the temperature cycle.

Conclusions

Au-Sn solder is an excellent material with superior attributes and is the solder of choice, with no obvious alternatives, in many applications. The cost considerations have to be weighed carefully, but in many applications the attributes of excellent wettability and ease of use overcome the cost of material. In fact, yields using Au-Sn solder are usually above 99.5%, making the cost of ownership and the goal of zero defects more easily achievable.

This product data sheet is provided for general information only. It is not intended, and shall not be construed, to warrant or guarantee the performance of the products

described which are sold subject exclusively to written warranties and limitations thereon included in product packaging and invoices.

S O L D E R

INDIUM CORPORATION®

www.indium.com
 askus@indium.com
 PRC +86 (0)512 628 34900
 SINGAPORE +65 6268 8678
 UK +44 (0) 1908 580400
 USA +1 315 853 4900

